

ELECTRIFICATION LIBRARY



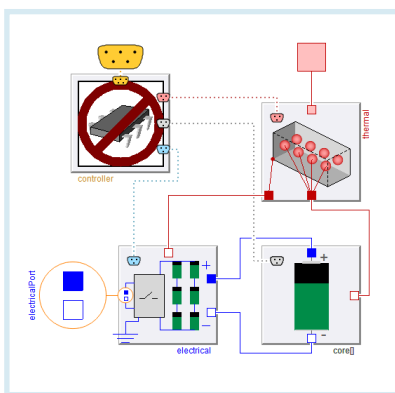
► An integrated solution and common modeling architecture for electrified systems.

Electrification Library delivers state-of-the-art models for the electrification of automotive, aerospace, industrial, energy and power systems. The library includes systems modeling components, each with configurable thermal interfaces, including: batteries, machines, converters, wires, and loads. With a scalable architecture and compatible component models, Electrification Library offers a flexible and configurable library to support multi-fidelity electrification applications across different use cases.

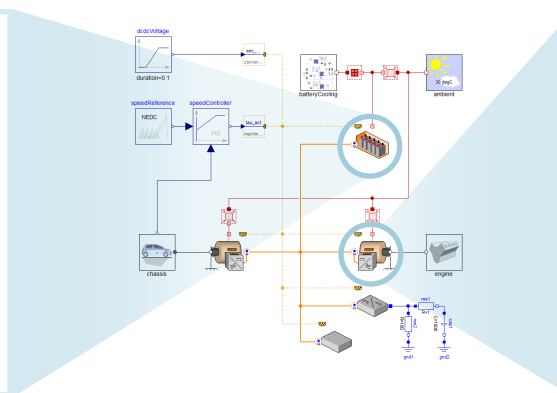
Developed in close cooperation with leading industry partners, this library can be directly integrated with libraries included in the Modelon Library Suite.

KEY FEATURES:

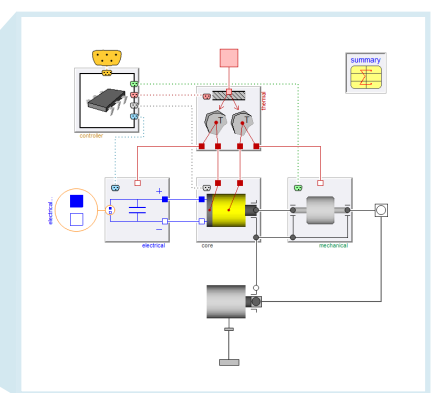
- Multi-physics library for electrical, mechanical, thermal, and controls dynamics in electrified systems
- Advanced battery models including thermal and aging
- Streamlined modeling and variant handling based on model architectures
- Open, modular, and easily extensible



Battery Pack



Series Hybrid Vehicle



Electric Machine

